

Caring for Croston



Coffee Day Sat 1st July 2023



This has been held on the first Saturday in July since the 1800s, only being cancelled on a few occasions : in 1815 out of respect for those involved and affected by the First World War and in 1963 when there was a terrible thunderstorm and downpour. The banners took weeks to dry out!

Our annual Procession of Witness involves members of all the principal faiths in the village and the many community, charity and sports groups that our wonderful village is famous for. Do walk in the procession- you'll be made v welcome.

Coffee Day Events

- ◇ 2pm St. Michael & All Angels' Church Service
- ◇ 2.20 pm Procession gathers between the War Memorial & The Grapes
- ◇ 2.30pm Procession of Witness
- ◇ Proceeds along Town Rd. Station Rd., turns at Croston Station . Returns and goes down Westhead Rd. , rest period behind Westhead Chippy before returning to the church.
- ◇ Eccleston Brass Band will provide wonderful music for us as we process and afterwards in the church grounds.
- ◇ There are stalls also to enjoy perusing in the church grounds .
- ◇ Croston Coffee Day is a great day out for all . Croston Parish Council would like to thank the Coffee Day Organisers and everyone involved in providing us with this most enjoyable event. Let's hope it's " a reet gud do !"





Keep Croston Tidy Community Group

For info. contact Andy Greene: andygreene@hotmail.com

Hello! Look out for us in bright yellow tabards. We're out and about regularly & everyone's warmly welcome to join us. Many Duke of Edinburgh Students carrying out voluntary work have helped over the years.

All tabards, grabbers, gloves, hoops and bags provided. Children to be accompanied by a responsible adult please.

Approx. **750 bags of litter** have been removed from the parish hedgerows, verges, pavements and roads since volunteers started in lockdown in 2019.



D of E Students Hannah, Harry, Mabel & Richard with Croston Residents who stopped to admire the students' efforts. The volunteers weeded and brushed outside the Community Centre before helping residents there with their weeding, following which the D of E students set off around the village to litter pick. Wonderful community effort!

Love Croston Please Use Bins

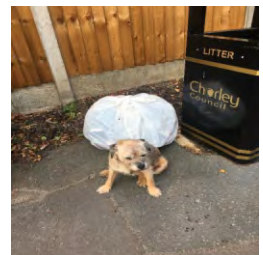
"It's extremely satisfying to know that I am doing my bit to help keep our beautiful parish litter free and it's great exercise! A win, win situation"
Sarah, volunteer since 2019.



Ben—happy to help



Thomas & Owen D of E Students



Roxy with the bag of litter she collected

Litter Facts Croston:

- On average, 3 items of litter are discarded on Highfield Rd every day.
- 7 out of 10 items of litter found is food packaging or wrappers. Over 1 million animals die each year after becoming entrapped in or ingesting litter.

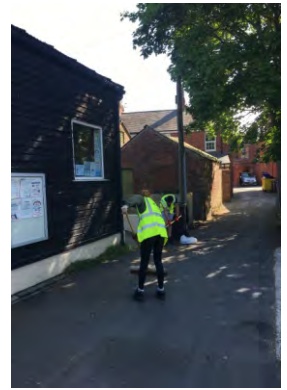
We work closely with Chorley Council who have sponsored some our equipment and collect bags on Tuesdays. Thank you to all volunteers involved with KCT Community Group.

What do we find on our picks?

In addition to huge amounts of takeaway packaging, plastic and glass bottles, confectionary wrappers, discarded cigarette packets and 100s of cigarette butts ... we've also found a stolen handbag, inner tubes, coins, items of clothing and a rather handy stool!



Runshaw Student Alex



Young volunteers looking after Castle Walks



Always something interesting on Meadow Lane - A neck scarf

Stool found on Moor Road



Cyclists please take your discarded inner tubes home with you - thank you

...even the smallest piece of a sweet wrapper could be a real danger to nature .

In the Spotlight

Dog Stations have appeared at The Croft & Drinkhouse thanks to the initiative of two Croston dog lovers.

Great acts of kindness have been shown by Croston dog lovers **Pauline and Angela** in setting up Dog Stations in the village. Complimentary water, a dog treat and a poo bag are available plus the all important litter bin to pop that bag in! What a very helpful idea & far better to dispose of a poo bag responsibly than seeing poo bags dangling from trees.



Respect Croston -Poo bags in bins please, not hedges on the moss walk

We caught up with Pauline and here's what she had to say:

"I love living in the village and am lucky enough to live on Drinkhouse Road. I walk my two dogs every day come rain, hail, or shine. I know however that there are 2 problems on the moss: not enough bins to put dog waste and being caught short without a dog waste bag. The ginnel at the back of Drinkhouse particularly seemed to be where dog waste was being left. I had a spare bin in the garage so decided to set up a little dog station. I am delighted that the bin is being used & it has encouraged other people to do the same! A friend who lives next to the Croft has made a dog station there too... maybe the idea will spread through the village? I would also like to thank local neighbours who have put gravel down on the ginnel pathway behind and also a neighbour who takes time to come and strim the path and hedges. I love how people take pride in where they live and want to make improvements where they can to keep the village a lovely place to live".

CPC couldn't agree more! Thank you Pauline, Angela and the folks of Drinkhouse for looking after the popular footpaths there.



Pauline with her dogs

Do you know of any Caring for Croston residents we could feature in the Newsletter?

Yes! Then we'd love to hear their story. Please contact us on:

pstrachan@crostonparishcouncil@gmail.com or crostonpc@btinternet.com

Facts on Dog Poo Littering :

- ◆ Environmental Crime Enforcement
Officers can give anyone not seen clearing up after their dog, a fixed penalty notice for £50 which rises to £1000 if prosecution is in court.
- ◆ At residents request to CPC, we have spoken to Chorley Council about siting another black bin on the moss. CC stated there are complications of acquiring private landowner's agreement, stability of land to site bin, difficulties and cost of scheduling the large bin lorries to drive the extra distance, maneuver, return, with possible issues of getting past parked cars on the roads round the moss...so we'll take that as a 'no' for now!



Roxy welcoming dogs to Angela's Dog Station at The Croft



Pauline's Dog Station at Drinkhouse

**Respect Nature
Use Bins for Poo Bags
Thank You**



A message from Christine Garrity of Maw. & Neighbouring Villages u3a.

"We cover a wide local area and have several members from Croston. The u3a movement, but we are a nationwide organisation for people who are no longer in full time employment. We are run by members for members and our motto is **Learn, Laugh, Live**. We provide a wide range of activities and opportunities for learning in a friendly environment. We hold a regular **Community Morning** every Wednesday from 10.00 - 12.00 at **Mawdesley Village Hall** and I would like to invite any retired Croston resident to come along one week and see for yourself what we offer".

Croston Over 80s Christmas Parcel Deliveries

Inspired by the Meals On Wheels service, the Over 80s Christmas Parcel Deliveries is an independent charity that has been operating in Croston since 1980. Over 80s love the friendly visit and generous gift they receive just before Christmas. It's a lovely chance for a friendly chat, feeling loved and part of the village community during the festive period.

Please contact us to tell us of any over 80s who could be included in this lovely scheme.

We are also looking for helpers to continue the scheme. It's wonderful voluntary work.

Opportunities to help are as:

- 1) The clerk to continue the general organisation of paperwork
- 2) The Treasurer to keep a record and summary of the accounts
- 3) A Santa's elf to deliver the parcels and a friendly 'Hello' to over 80s around where you live

Croston businesses—would you like to sponsor this scheme?

For more information, please contact **Janet Maggs** on 01772 603336

Many thanks to Croston Scouts for delivering this Newsletter and to Out Lane Social Bar and Grill for sponsoring the C.P.C. Hi Viz waistcoats. We really appreciate your support.

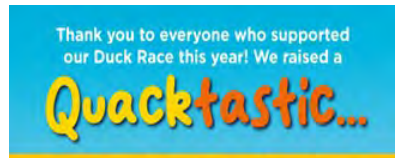
Croston St Michael's Scouts

Thank you to every-one who came along to the family picnic, celebrating King Charles' coronation. It was a fantastic afternoon with picnics/

games (loved the tug of war)/b-b-q and brilliant weather. This event couldn't have taken place without the financial help from Croston Together and the Parish Council - thank you. Also St Michael's Church for the use of Bishop Chester's Wood and the churches



'facilities'! A big Thank You for all your donations this money is going towards 2 new extensions for our Scout tents. If you would like to be involved with Scouts in any way please get in touch with Paul Smith GSL 07944584136 or see a Scout Leader.



£1950



Croston Cache Adventure Trail

Croston Station is much more colourful now thanks to four new panels on the cycle rack. Designed by Years 4 and 5 of Trinity St Michael's Primary School in conjunction with Community Rail Transport and Friends of Croston Station, the design includes a map of the village, and 10 hidden geocaches.

The children attended an official opening, handing out train shaped biscuits to all the representatives. "It really does brighten up the cycle shelter. This was a really good collaboration between the different organisations, and thanks to all involved".

Kath Almond, Friends of Croston Station





Follow our handmade map for a fun family activity which can be done at your leisure. Work out the answers to the riddles to help you on your quest.

Question – Where was the first train ever built?
Clue – Bold on the wall.
Latitude: N 53 66.747
Longitude: W 2 77.791

Question – What is the purpose of the kissing gate?
Clue – Puckered up!
Latitude: N 53 43.437
Longitude: W 46 14.331

Question – Who is the founder of the Methodist church?
Clue – This one is rock hard.
Latitude: N53 66.243
Longitude: W 2 77.640

Question – What is the oldest school in the UK?
Clue – Eggs roll down the valley.
Latitude: N53 39.611
Longitude: W 2 46.264

Question – Who was St Michael?
Clue – Don't look up. A treat is around every corner.
Latitude: N53 39.565
Longitude: W2 46.404

Question – When did WWII start and end?
Clue – They say don't look back. In this case, do.
Latitude: N53 39.619
Longitude: W2 46.277

Question – When was the story 'The Gruffalo' written?
Clue – Its bark is worse than its bite.
Latitude: N53 39.536
Longitude: W2 46.331

Question – How many trees are there in the UK?
Clue – Cluck cluck
Latitude: N53 39.526
Longitude: W2 46.208

Question – How many bridges are there in the UK?
Clue – Look towards the things that bloom.
Latitude: N53 39.619
Longitude: W2 46.412

Question – When did Croston win the Best Kept Village award?
Clue – Make a wish!
Latitude: N53 39.661
Longitude: W2 46.480

Created by years 4 and 5 Trinity and St Michael's Church of England and Methodist Primary School Croston



Make a **BEELINE** to Croston Station to find 10 Geocaches hidden around this beautiful village in Lancashire.





Trinity Methodist Church Croston

Please visit our website crostonmethodist.org.uk for details of:

10.30am **Sunday Services** and the monthly 6.30pm Encounter Sunday Evening Worship.

We host **Community Classes** - Art for Happiness, Pilates and Yoga.
(please see website for further details)

Messy Church takes place monthly, on a Tuesday from 4.30pm to 6.00pm.

The **Open Doors Hub** takes place in our meeting room on the last Friday of every month from 9.00am to 11.30am. All are welcome and refreshments are provided.

The popular **Domino Drive** take place every Friday in the Church meeting room from 2.00pm to 4.00pm. New players are most welcome.

Foodbank contact – Dilys Lightfoot. (Please see the website for further details).

George Lloyd - Steward 01772 600 705 (General enquiries)

Dilys Lightfoot - Steward 01772 601 622 (Lettings Secretary and Foodbank)

Croston Recreation Park a word of thanks from Croston Together

Work on the Natural Play Area is now complete thanks to grants from Chorley Borough Council and Croston Parish Council, and the work of volunteers from Croston Together.

This area is dedicated to our dear friend Mary Driver who was a great advocate of children's play.

The area is suitable only for primary-aged children. Use by older children or adults is likely to result in damage. Please respect and care for this new area of our lovely Park.

...and a word from **Croston Parish Council**

The Recreation Park is one of the best of its kind in Lancashire. Many volunteers, over a number of years, have invested huge amounts of their time into making it the fantastic place it is. It's absolutely beautiful. Please help C.P.C and Croston Together keep it the wonderful place it is, by respecting the guidance on signage at the Park. Thank you very much indeed.
Regards, C.P.C.



Croston Old School

Open for Life

We are pleased to announce that in April, we received the news that we have been kindly given a Grant from Chorley Council for our South Wing (The Old Pre School as many of you will know it).

This is allowing us to renovate the old children's toilets on this side and furnish the room as well now hosting a Pop-up community café each week. Until mid August this takes place on Wednesday & Thursday mornings 9am-12.30pm serving hot/ cold drinks & homemade cakes.

As part of the pop-up café, we are also hosting many taster sessions of different activities. Offering craft, painting, singing, chair yoga, children's workshops & much more at a low cost rate or often free to the community each week. Please keep your eyes peeled on our noticeboards and website, as well as on our social media pages for the timetable of events...



The south wing space is also available to hire for weekly groups & classes. This will also make an excellent space for events & children's parties, in addition to the Hall and Yarrow room in the North wing which we have only been able to offer historically. Please check out our website for a list of the classes we host within Croston Old School.

Dates for your diary:

Merry Hell Band in Concert , Friday 15th September 2023, 7.30pm, £16pp

Tickets now on sale at Feather & Twigs, Town Road, Croston or online:

<https://www.wegotickets.com/event/584003/>

Heritage Weekend Saturday 16th & 17th September 2023

At Croston Old School, North Wing, Hall.



You can also find us on Facebook and Instagram @crostonoldschool

Croston Old School,
Church Street, Croston, PR26 9HA
Tel: 01772 603600
Email: admin@crostonoldschool.org
Web: www.crostonoldschool.org

Pre-Loved Shop

Children's clothes & toys 0 - 16 years



Sunday, 25th June 2023

11:30am - 3pm

Croston Community Centre

**Light Refreshments available £5 a table
cash only**

An easy way to make money from the clothes your children have outgrown!

Either man your own table or we can sell them for you

If you'd like to take part please email Susan; john.twinn@btinternet.com

We'll email you your unique code

Tag your clothes with a price and your code

Bring them to the Community Centre on Saturday, 25th February between 2pm—3pm

On the day of the sale we will take the money for all purchases, and then pass this back to you.



THE REIKI VAN - RUFFORD

LET'S WORK TOGETHER!

Located in beautiful rural Lancashire, take time to heal with a treatment in The Reiki Van. The Reiki Van has been custom-made from a horse box and is the perfect environment for a little bit of escapism, indulge in some time for yourself in this unique and relaxing environment.

TO BOOK A TREATMENT, VISIT:

www.thereikivan.com



EMMAN MORRIS

CONTACT:

✉ thereikivan@yahoo.com

☎ +447 904 57 003

🌐 www.thereikivan.com

📱 @thereikivan



Produce classes · Flower classes · Food classes · Home Brew · Craft classes · Children's classes

*****Save the Date*****

12th Annual Croston Flower, Produce & Craft Show

Saturday 2nd September 2023

Croston Community Centre, Castle Walks

Entries between 9:00am and 10:30am

Public viewing from 2:00pm

Trophies awarded at 2:30pm followed by Auction

Schedules to follow

For more information contact Ian Coggin / Rachel Nightingale
e: crostonvillageshow@gmail.com t: 07966 487886



CROSTON VILLAGE SHOW
FLOWER · PRODUCE · CRAFT

Produce classes · Flower classes · Food classes · Home Brew · Craft classes · Children's classes

Advertise your business in the next Parish Newsletter and website

Please contact
crostonpc@btinternet.com

Next Newsletters delivered
Autumn - mid Sept,
Winter - mid Dec.

Look out for exciting new
CPC website development in
the Autumn
www.crostonpc.org

Disclaimers:

Articles

Croston Parish Council accepts no responsibility for items provided by third party contributors.

Adverts

Croston Parish Council does not endorse or recommend any of the advertisers contained in this publication.

Produce · Flower · Food · Home Brew · Craft · Children's

Produce · Flower · Food · Home Brew · Craft · Children's

CROSTON ALMSHOUSES CHARITY

Administering 13 Alms Houses in the ancient township of Croston

TRUSTEE VACANCIES

We are looking for a number of committed and energetic people to join the Board of the new Alms Houses Trust. In particular, we are looking for people with:

Property management experience to have oversight of day-to-day maintenance and repair; commissioning both planned upgrades and routine maintenance; liaising with contractors, residents and other Trustees. You will need a working knowledge and experience of property management and maintenance, contract management, planning and building regulations, annual safety checks, and Health & Safety etc

Financial Management experience to have oversight of the Trust's finances, maintaining records of income and expenditure, paying bills and liaising with residents to ensure collection of residents' maintenance contributions, etc. You will need to have experience of managing finance in an organisational setting and of liaising with accountants to produce annual accounts.

Trustees will normally only need to attend two or three Trust Board meetings per year (usually in the evening) and occasional informal meetings of the core group of Trustees.

CLERK TO THE TRUSTEES

We are also looking for a committed and energetic person with administrative experience to support the work of the Trustees. In consultation with the Chair, you will produce agendas & minutes; arrange the formal meetings of the Trustees; and deal with correspondence. You will also manage the process of advertising any vacant Alms Houses and prepare reports for the Trustees to enable decisions on the allocation of properties. You will have a knowledge and experience of the management of formal meetings and the associated administrative practices as well as sound IT skills. Experience of property lettings or housing management would also be useful.

These are voluntary, unpaid roles that offer the opportunity to make a positive and rewarding contribution to the wider work of this Charitable Trust supporting those in need, hardship and distress in the Ancient Parish of Croston (including Bispham, Bretherton, Croston, Hesketh with Beconsall, Mawdesley, Rufford, Tarleton and Ulnes Walton).

If you would like to be considered for any of these roles, please contact the Chair, Andrew Marston at andrew.marston1@btinternet.com with a brief expression of your interest and relevant experience. Informal discussions will be arranged with interested parties prior to an appointment being offered.

Croston Village FESTIVITIES GROUP

THE CHRISTMAS FAIR NEEDS YOU !

Croston Village Festivities Group (CVFG) held their AGM on Monday 24th April 2023. 12 people attended and we were able to establish a committee of 10 to consider planning of the **2023 Xmas Fair** on

Sunday 3rd December 2023.

We need help to run the event due to several key people retiring . We have decided as a group to hold a **PUBLIC MEETING** at the **SPORTS CLUB** on **Monday June 26th (7.30pm)** to make the final decision as to whether we have sufficient help to be able to run the Fair this year. One or two helpers signed up after the meeting , but we still have insufficient numbers to enable the event to take place.

Our thanks to those who have already come forward! If you want to help please come along to the meeting.

**Can you please pledge just an hour to help on
Sunday 3rd Dec ?**

Help required can be as little as just an hour on the day helping us set up on the Green or selling raffle tickets or if you can't be there on the day, there are multiple small jobs required before the event.

The decision on June 26th will be final and without more help the Fair and lights (apart from the Parish Council lights on the tree and the Green) will not happen and the committee will be dissolved.



Please seriously consider whether you want this event to go ahead for the village ... remember how good it was last Christmas? We have the funds to do this but as usual help to run it is scarce. If you do want the event to go ahead please sign up even for just an hour before or on the big day. You can reach us on

crostonvillagefestivities@hotmail.com

cvfgcontact@gmail.com

or via our website crostonvillagefestivities.com contact link

We know we sound like a broken record but this really is our last chance to do this!

THANK YOU

Croston Village Festivities Committee 2023

Here To Help

Your Councillors:

Pauline Strachan (Chair)
pstrachancrostonparishcouncil@gmail.com

Chris Worthington (Vice Chair)

Kath Almond 01772 600368
kathalmond@btinternet.com

Martin Cahill 07598421819
mcahill@gmail.com

Peter Fenemore 01772 600572
Peter.fenemore@googlemail.com

Sarah Moulton 07854628834
sally.poppy@hotmail.co.uk

Paul Sloan 07434498899

Catherine Titherington-Teale
07888373246
ctitherington@hotmail.com

Caroline Turner 07850534319
carolineturner7a@yahoo.com

Your clerk:

Alan Platt
9, Ambleside Avenue
Euxton
Chorley
Lancs
PR7 6NX

crostonpc@btinternet.com

Facebook: @crostonparishcouncil

Website: www.crostonpc.org
(being developed)

Your Council Meetings:

second of each month
(except August) at 7.30pm,
Old School, Church St. Croston
PR26 9HA
Details of the meetings are placed
in the
notice boards prior to the
meetings.

Residents are always welcome to
attend and take part in the Public
Participation section of the
meeting .

Croston Parish Council Open Meeting

Tuesday 20/ 6/ 23

1) Youth Meeting

6.30pm - 7pm

all ages under 18 yrs & their parents welcome .

NB Questions/ points only taken from under 18s - Thanks

2) All Residents

7pm - 7.45pm

*Caring for Croston
What are your ideas ?*

Useful Telephone Numbers

Police (non-
emergency) 101

British Transport
Police (Croston
Station and Car
Park) 0800405040

Lancashire County
Council (roads&
pavements , includ-
ing street lighting)
0300 123 6780

Love Clean Streets
App to report dam-
aged signs, street
lights , hot holes
etc...

Chorley Borough
Council
01257 515151

Your Borough Councillors

Cllr Keith Iddon
07787 005663
Keith.iddon@chorley
.gov.uk

Cllr Alan Platt
07960 003401
Alan.Platt@chorley.gov.uk

Cllr Craige Southern
07831440558
Craige.southern@ch
orley.gov.uk

County Councillor
Keith Iddon 07787
005663

Notice Boards

Keep up to date with
Parish Council activi-
ties and details of
meetings etc... The
notice boards are
located on the Vil-
lage Green, outside
Morrison's and by
the Surgery on
Brookfield.

Local , non-profit
organisations wish-
ing to include A4
sized posters to
publicise events
etc...should contact
the clerk.